

# PRE-UNI NEW COLLEGE

## 2024 Discounts and Award

As a Pre-Uni New College Student you may be eligible for discounts for a wide range of products and services. Find out the student benefits on offer.

### Discounts

#### Early Bird Benefit

Pay early and get discount

- a. A Full-Term Early Payment Discount may apply on full-term fees paid by due date.
- b. The Full-Term Early Payment Discount cannot be applied to trial test courses, such as STTC/OC TTC/OCFC/NTTC, and other similar courses



#### Family (Sibling) Benefit

Students who have a sibling enrolled at Pre-Uni New College are eligible for the Sibling Discount.

To receive Family discount, Parents apply for the family discount through a dedicated website:

<https://booking.newcollege.com.au/SiblingApplication>



- a. Students must be immediate siblings residing at the same address.
- b. They must enroll together for the same term at the same branch.
- c. Primary (K-6) students must enroll in a standard EM, EMG, WEMT, or 6+ course.
- d. Secondary (7-12) students require **two or more** high school courses.
- e. All students must pay full-term fees by the Early Bird Payment due date.
- f. The first student to enroll (regardless of grade) will receive the Early Bird Payment discount.
- g. Each additional qualifying student will receive the **Early Bird Payment discount plus an additional \$70 off their fees.**
- h. Students with a scholarship are not eligible for the sibling discount.
- i. Sibling discounts will be revoked if any enrollment is canceled after payment.

### Study hard, Get award

#### MISRP

Awarded to the students who most Improved on term test

Who

Years 2 to 5 WEMG/T students who demonstrated the continuous improvement in their term tests since the last three (3) consecutive terms.

When

Every Term  
Scholarship\*  
**\$50 Credit**

#### Annual Scholarship Test

Awarded to the students who perform best on the our Scholarship Test

Who

Year 2/3/4 and Year 5

When

December  
Scholarship\*  
up to 50% discount  
WEMT or 6+ Course Tuition fee from Term 1 to Term 4  
(Conditions apply.)

Year 5

#### OC Scholarship

Awarded to the students who were successful OC Placement Test

Who

Students who have achieved the minimum band score (set by the college) in the recent OC placement tests.

Scholarship\*

Up to 50% scholarship discount for Year 5 & 6 standard both WEMT and STTC course enrolments.  
(Conditions apply.)

Year 6

#### Selective Scholarship

Awarded to the students who were successful Selective High School Placement Test

Who

Students who have achieved the minimum band score (set by the college) in the recent Selective High Schools placement tests.

Scholarship\*

Up to 50% scholarship discount for Year 6 -10 regular full-term standard courses enrolments.  
(Conditions apply.)

### Compete, Get award

#### Book Review Competition

#### Read the book & Write a review.

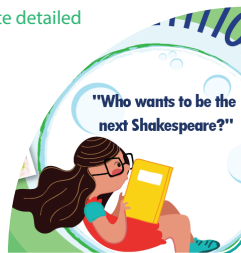
Read recommended books and Write detailed book reviews

Who

Years 1 to 5  
WEMT/WEMG/  
EMT/EMG students

When

Every Term  
Scholarship\*  
**\$100 Credit**  
(Conditions apply.)



#### Drawing Competition

#### Artists of the Future

Competitions for Painting, Drawing



Who

Anyone who loves Drawing

When

November

Theme

Announce early August

Scholarship\*

Gold Award - **50%** Scholarship\*

Silver Award - **35%** Scholarship\*

Bronze Award - **25%** Scholarship\*

Artist Award - **20%** Scholarship\*  
discount for Term 1 tuition fee

\*Discount offer cannot be used in conjunction with any existing scholarship, sibling, early bird, full-term payment and TTC+WEMT combined discount offer. For more detail and conditions, ask our staff.

Academic Success with  
**PRE-UNI NEW COLLEGE**

OC, Selective School, HSC Coaching Specialists

