

## PRE-UNI NEW COLLEGE

Head Office: 5 The Crescent, Strathfield NSW 2135 PH: 9746 7000 FAX: 9746 6999  
Email: [info@newcollege.com.au](mailto:info@newcollege.com.au) Website: [newcollege.com.au](http://newcollege.com.au)

Are you looking to give your Year 2 student a head start for upcoming school assessments and tests? Our engaging term 2 courses are designed to give your child a strong foundation and boost their confidence in key academic areas.

- ✚ Targeted Skills Development: Our rigorous courses will focus on sharpening essential skills like writing, reading comprehension, critical thinking, and mathematical reasoning.
- ✚ Engaging Learning: We make learning fun and interactive, keeping your child motivated and engaged throughout the term.

Check out the next pages for complete term 2 course schedule.

### New Term 2 Schedule for Year 2!

Exciting news! We're expanding the Year 2 sessions, giving you more flexibility to choose what works best for your child.

- ✓ Year 2 students can now join the new **Thursday** WEMT session at Strathfield Head Office.
- ✓ From Term 2, a new Writing course will be available on **Wednesday** at Strathfield Head Office.

## Year 2 Term 2 Course

(Saturday, 26 April – 5 July)

Course	Session	Class Time*	Class Location*
Year 2 Standard WEMT	Saturday MC	9:00am – 12:30pm	<a href="#">The McDonald College</a>
	Saturday AC	1:00pm – 4:30pm	<a href="#">The McDonald College</a>
	<b>Thursday 'NEW'</b>	4:30pm – 8:00pm	5 The Crescent, Strathfield
	Friday	4:30pm – 8:00pm	5 The Crescent, Strathfield
<b>Writing</b>	<b>Wednesday 'NEW'</b>	<b>5:00pm – 7:40pm</b>	5 The Crescent, Strathfield

- ✚ **Early Bird Payment & Sibling Discounts:** Don't miss out! These discounts are available until **Monday, 14<sup>th</sup> April, 5 PM.**
- ✚ **Enrolment:** Once enrolled, students cannot transfer to another branch until the course is completed.
- ✚ **Class time and location\*** are subject to change depending on the number of enrolments and available classrooms.
- ✚ **CAR PARK:** We do not provide parking for parents on our campus, including the Strathfield Head Office, McDonald College, Homebush Boys High and Strathfield Centre (8 Lyons St. Strathfield). Please remember to arrange for safe drop-off and pick-up of your child.



SINCE 1992

### What's On

**15 – 21 March**  
Term tests period

**Saturday, 5 April, 5PM**  
Autumn Course E/B discount offer ends.

**Monday, 14 April, 5PM**  
Term 2 E/B & sibling discount offer ends.

**14 – 17 April**  
Autumn EMT Course (4 days)

**22 – 24 April**  
Autumn English course (3 days)

**Saturday, 26 April**  
Term 2 begins.

**Saturday, 3 May**  
Term 1 book review competition ends.

**Saturday, 5 July**  
Term 2 ends

### Maximise your learning with Cyberschool services.

Log in to [Cyberschool](#) and access its WEMT resources:

- Module answers
- Video lessons
- SOQ, TS/PS, S-Maths
- Vocabulary tests
- Term test review
- My Results

## Year 2 WEMT Course

We are thrilled to announce that the Year 2 WEMT course is back and better than ever, with an updated curriculum designed to help you reach your academic potential! Our course is designed to provide students with the essential skills and knowledge they need to excel in their studies and beyond.

**Exam Readiness:** Build a strong foundation in reading, writing, maths, and thinking skills, crucial for all upcoming assessments. Our comprehensive approach ensures that students are well-prepared for exams, equipped with the confidence and capability to tackle any challenge.

**Mastering Reading Comprehension:** Develop techniques to tackle challenging texts and ace multiple-choice questions with confidence.

**Mathematics Made Easy:** Gain a solid understanding of mathematical concepts, formulas, and problem-solving techniques. Our curriculum is designed to make maths accessible, breaking down complex topics into manageable lessons that build students' competence.

**Mind-Stimulating Thinking Skills:** Challenge yourself with engaging exercises to enhance critical thinking and problem-solving abilities. Each module encourages students to develop their analytical skills through a variety of stimulating activities.

Whether you're aiming to improve your exam scores, enhance your writing, or master mathematical concepts, the Year 2 WEMT course is here to support your academic journey.

### Year 2 Term 2 WEMT Course – Timetable & Class Location

Course	Session	Class Time*	Class Location*
Year 2 WEMT	Saturday MC	9:00am – 12:30pm	The McDonald College
	Saturday AC	1:00pm – 4:30pm	The McDonald College
	Thursday <b>'NEW'</b>	4:30pm – 8:00pm	Strathfield Head Office (5 The Crescent)
	Friday	4:30pm – 8:00pm	Strathfield Head Office (5 The Crescent)

📌 Class time and location\* are subject to change based on enrolment numbers.

### Year 2 Term 2 WEMT Course – Fee Schedule

Course Name	Session	Starting Date	Tuition Fee per week	No. of weeks	Material Fee	Total	Early Bird Payment Discount Offer* (by 14-Apr-25)	Full Term Enrolment Discount Offer** (by 2-May-25)
Year 2 WEMT	Saturday	26-Apr	\$ 70	11	\$ 80	\$ 850	\$ 780	\$ 815
	Thursday	01-May	\$ 70	10	\$ 80	\$ 780	\$ 710	\$ 745
	Friday	02-May	\$ 70	10	\$ 80	\$ 780	\$ 710	\$ 745

- **Early Bird Discount Offer\*** prices are valid for **full** term payments by Monday, **5pm, 14<sup>th</sup> April 2025**.
- **Full Term Enrolment Offer\*\*** prices are valid for **full** term payments by Friday, **5pm, 2<sup>nd</sup> May 2025**.
- **Sibling discounts** are available until Monday, **5pm, 14<sup>th</sup> April 2025**.
- **Additional surcharge** will apply to all credit card payments. We only accept VISA and Mastercard.

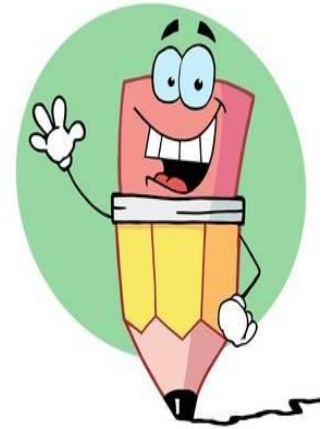
## Year 2 Writing Course (Wednesday)

Does your child want to become a confident and creative writer?

Our fun and engaging Year 2 Writing Course, starting in Term 2, will help them build strong technical and creative writing skills!

**Supporting Individual Needs:** This personalised course caters to each child's strengths and weaknesses in writing. It aims to improve their:

- ✚ Confidence: Feeling empowered to express themselves through writing.
- ✚ Capability: Mastering essential skills for various writing tasks.
- ✚ Proficiency: Excelling in classroom writing, NAPLAN and ICAS assessments.



**Exciting Curriculum:** Each week, students will embark on a writing adventure, exploring:

- ✚ Grammar, punctuation, and spelling: Tailored to specific text types, as required by the current English Curriculum.
- ✚ Essential writing skills: From sentence structure to paragraphing and editing.
- ✚ Engaging topics: From personal experiences ("All about me" and "A Day in My Life") to exploring animals and familiar landmarks.

Ready to help your child thrive in writing? Enrol in the Year 2 Writing Course today!

### Year 2 Term 2 Writing Course – Class Timetable

Course Name	Session	Class Time	Class Location*
Year 2 Writing	Wednesday	5:00pm – 7:40pm	Strathfield Head Office (5 The Crescent)

✚ **Class time and location\*** are subject to change based on enrolment numbers.

### Year 2 Term 2 Writing Course – Fee Schedule

Course Name	Session	Starting Date	Tuition Fee per week	No. of weeks	Material Fee	Total	Early Bird Payment Discount Offer* (by 14-Apr-25)	Full Term Enrolment Discount Offer** (by 2-May-25)
Year 2 Writing	Wednesday	30-April	\$ 55	10	\$ 55	\$ 605	\$ 550	\$ 577.50

- **Early Bird Discount Offer\*** prices are valid for **full** term payments by Monday, **5pm, 14<sup>th</sup> April 2025**.
- **Full Term Enrolment Discount Offer\*\*** prices are valid for **full** term payments by Friday, **5pm, 2<sup>nd</sup> May 2025**.
- Sibling discounts do not apply to the writing course.
- **Additional surcharge** will apply to all credit card payments. We only accept VISA and Mastercard.

# Welcome Gift

NEW

for



# Students Free School Bag!

Head Office ONLY

Available Exclusively for Term 2 Full-Term EM, EMG, WEMT Enrolments at the Head Office  
(Terms & Conditions Apply - See below)

### Welcome Gift for New Students: Terms & Conditions

- This offer is for new students who enrol in Term 2 full-term EM, EMG, or WEMT course at Strathfield Head Office.
- Students must not have previously enrolled in any courses at Pre-Uni New College Strathfield Head Office.
- Offer is valid until 2nd May 2025.

- ✓ **New Students**
- ✓ **Term 2 Full-Term**
- ✓ **Strathfield Head Office**



Prefer to register Online?  
Scan the QR Code now  
and sign up easily!



Academic Success with  
**PRE-UNI NEW COLLEGE**  
[www.newcollege.com.au](http://www.newcollege.com.au)