

PRE-UNI NEW COLLEGE

Head Office: 5 The Crescent, Strathfield NSW 2135 PH: 9746 7000 FAX: 9746 6999
Email: info@newcollege.com.au Website: newcollege.com.au

Dear Year 4 (**Year 5 in 2021**) Parents,

The 2021 Term 1 will commence on **Saturday, 23rd January**.

Year 5 Term 1 courses are structured to accommodate the high academic standards expected of students for their Selective High School Placement Test in 2022.

Year 5 WEMT lesson time will be **increased to 4 hours** to build a solid foundation and have the advantage of getting ahead.

Please check the new Year 5 course timetable below.

Year 5 Term 1 Course Timetable and Class Location

Course	Session	Class Time	Class Location
Standard WEMT Course	Saturday MC	8:30am – 12:45pm	Homebush Boys High School
	Saturday AC	1:20pm – 5:35pm	
	Sunday MC	8:30am – 12:45pm	Strathfield Centre
	Sunday AC	1:00pm – 5:15pm	
	Tue* – Friday	4:20pm – 8:35pm	Strathfield Head Office
Selective Prime Course (SPC)	Saturday MC	9:15am – 12:25pm	Homebush Boys High School
	Saturday AC	1:30pm – 4:40pm	
	Sunday MC	9:15am – 12:25pm	Strathfield Centre
	Sunday AC	1:30pm – 4:40pm	
	Tue* & Wed	5:20pm – 8:30pm	Strathfield Head Office
C/Writing	Wednesday	5:00pm – 7:40pm	Strathfield Head Office

- **Tue*** – Due to Australia Day on 26th January, the first Tuesday class lesson will be held on **Wednesday 27th January 2021**.
- Please note that **Sunday** classes will be held at our **Strathfield Centre (Level 1, 8 Lyons Street, Strathfield)**
- Due to the limited capacity in each class, attending another class to make up the missed class will not be allowed.
- All class activities will be in line with NSW Health guidelines as applicable and follow good hygiene practices including strict drop off & pick up procedures, limitation of class size, regular handwashing and continued on-site cleaning and sensitisation. Please find more information on Page 5.



SINCE 1992

What's On

18 November 2020

OC Placement Test

22 November 2020

Annual Scholarship Test

28 November – 4 December

Term tests period (Online)

Saturday, 19 December, 5PM

Summer & Term 1 WEMT Full Term
Early Bird Discount offer ends

Sunday, 20 December 2020

Term 4 ends

4 – 15 January 2021

Summer Intensive Course (10 days)

Saturday, 23 January 2021

Term 1 WEMT, SPC begins

Tuesday, 26 January 2021

Australia Day – NO CLASS

Wednesday, 27 January 2021

Creative Writing course begins

Don't have your own Cyberschool account yet?

Go to the Cyberschool website and register for its online services:

- Module Answers
- Video Lessons
- Special Online Quiz (S.O.Q)
- Term test review

All Cyberschool online services are available during the normal term course period only.

Year 5 WEMT Course

Year 5 WEMT course will commence on **Saturday, 25th January**. This will require a significant commitment of **4 hours** module work each week in Writing, English, Maths and **Thinking Skills** due to the nature of the advanced curriculum. In addition to having the advantage of getting ahead, WEMT course will help students build a solid foundation for the selective school placement tests and the independent school scholarship tests.

- The writing module teaches students the most efficient ways in organising writing structure with a focus on developing critical thinking and reasoning skills.
- English lesson will focus on reading skills and practising reading comprehension and multiple-choice questions.
- Mathematics lessons are essential for students to thoroughly understand mathematical theories, principles and formulas to solve problems.
- **Thinking Skills** lessons will cover a variety of practical, challenging and mind-stimulating questions in mathematical reasoning, **problem solving and critical thinking skills**.

Year 5 Term 1 WEMT Course – Class Timetable

WEMT Session	Class Time	Class Location*
Saturday MC	8:30am – 12:45pm	Homebush Boys High school
Saturday AC	1:20pm – 5:35pm	Homebush Boys High school
Sunday MC	8:30am – 12:45pm	Strathfield Centre (Level 1, 8 Lyons St. Strathfield)
Sunday AC	1:00pm – 5:15pm	Strathfield Centre (Level 1, 8 Lyons St. Strathfield)
Tue/Wed/Thu/Friday	4:20pm – 8:35pm	Strathfield Head Office

Year 5 Term 1 WEMT Course – Fee Schedule

Course Name	Session	Starting Date	Tuition Fee per week	No. of weeks	Material Fee	Total	Full Term Early Bird Special Offer* (by 9-Jan-21)	Full Term Enrolment Offer** (by 29-Jan-21)
Standard WEMT Course	Saturday	23-Jan	\$70	10	\$ 85	\$ 785	\$ 715	\$ 750
	Sunday	24-Jan	\$70	10	\$ 85	\$ 785	\$ 715	\$ 750
	Tuesday	27-Jan*	\$70	10	\$ 85	\$ 785	\$ 715	\$ 750
	Wednesday	27-Jan	\$70	10	\$ 85	\$ 785	\$ 715	\$ 750
	Thursday	28-Jan	\$70	10	\$ 85	\$ 785	\$ 715	\$ 750
	Friday	29-Jan	\$70	9	\$ 85	\$ 715	\$ 645	\$ 680

- **Early Bird Discount Offer*** prices are valid for **full** term advance payments by **5pm, 9th January 2021**.
 - Payments for Term 1 course at the Head Office will be available from **2nd January 2021**.
- **Full Term Enrolment Offer**** prices are valid for **full** term advance payments by **8pm, 29th January 2021**.
- **Additional 1.02% surcharge** will apply to all credit card payments. We only accept VISA and Master Card.
- Availability whether to open Cyber WEMT Course will be confirmed and will inform around January 2021.
- **27-Jan* – Due to Australia Day on 26th January, the first Tuesday class will be held on Wednesday 27th January.**

Selective Prime Course (SPC)

Year 5 Term 1 **Selective Prime Course (SPC)** will commence on **Saturday, 23rd January**.

The SPC is a special preparation course designed to maximise student performance in the Selective Trial Test Course (STTC) from Term 2. Each week, students will attempt three trial tests in English, Maths and **Thinking Skills**. After the tests, they will learn how to interpret the questions and find the correct answers.

The course will cover the following topic tests throughout the term:

Test No.	English	Maths	Thinking Skills
Test 1	Interview Book Review	Number Knowledge	Applying Principles Graph
Test 2	Documentary Textbook	Units and Measures	Applying Principles Graph
Test 3	Feature Article News Story	Measurement and Data	Assessing the Impact of Additional Evidence Number
Test 4	Travel Article Encyclopedia Article	Number Problems	Assessing the Impact of Additional Evidence Number
Test 5	Science Report Information Report	Arithmetic Operations	Identifying the Main Conclusion Drawing a Conclusion Space & Spatial Reasoning
Test 6	Exposition Debate	Geometric Operations	Identifying the Main Conclusion Drawing a Conclusion Space & Spatial Reasoning
Test 7	Discussion Poetry	Space and Geometry	Detecting Reasoning Errors Table
Test 8	Discussion Article Poem	Number and Algebra	Detecting Reasoning Errors Table
Test 9	Novel	Patterns and Algebra	Identifying Assumption Making Conclusions
Test 10	Comic Recount	Probability & Statistics	Identifying Assumption Making Conclusions

The SPC framework has been revised to accommodate the new computer-based digital test format from the 2021 Selective High School Placement Test. SPC students will attempt a new **computer-based tests (CBT)** from Term 1. For more information about SPC & STTC, please read the **2021–2022 STTC newsletter**.

Year 5 Term 1 Selective Prime Course (SPC) – Class Timetable

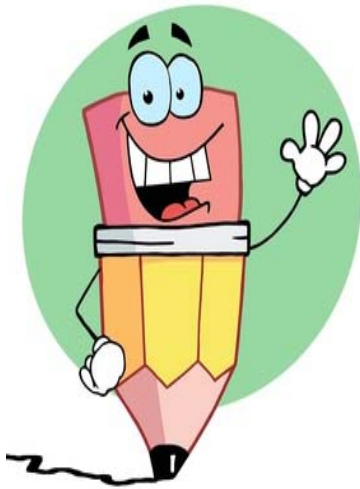
Course Name	Session	Class Time	Class Location
Selective Prime Course (SPC)	Saturday AM	9:15am – 12:25pm	Homebush Boys High School
	Saturday PM	1:30pm – 4:40pm	Homebush Boys High School
	Sunday AM	9:15am – 12:25pm	Strathfield Centre (Level 1, 8 Lyons St. Strathfield)
	Sunday PM	1:30pm – 4:40pm	Strathfield Centre (Level 1, 8 Lyons St. Strathfield)
	Tuesday	5:20pm – 8:30pm	Strathfield Head Office
	Wednesday	5:20pm – 8:30pm	Strathfield Head Office

Year 5 Term 1 Selective Prime Course (SPC) – Fee Schedule

SPC Session	Starting Date	Finishing Date	Tuition Fee per week	No. of weeks	Total Fee	Special D/C price*
Saturday	23-January	27-March	\$65	10	\$ 650	\$ 550
Sunday	24-January	28-March	\$65	10	\$ 650	\$ 550
Tuesday	27-January**	30-March	\$65	10	\$ 650	\$ 550
Wednesday	27-January	31-March	\$65	10	\$ 650	\$ 550

- **Special D/C price* offer** is available **only** to the students who enrol in **both** full term SPC and full term Year 5 WEMT course together. This price is for the SPC fee only and does **not** include the WEMT course fee.
- Additional 1.02% surcharge will apply to credit card payments. We only accept VISA and Master Card.
- ****NO SPC class on Australia Day (Tuesday, 26th January 2021).** The first Tuesday SPC class will be held on Wednesday 27th January.

Creative Writing Course (Wednesday)



Year 5 Wednesday Creative Writing Course will support students' development of technical and creative writing skills. It will cover areas including grammar, spelling and punctuation that pertain to specific text types as is required in the children's current English Curriculum.

This course will assist children to develop their narrative, descriptive, persuasive and explanatory writing skills so they can become proficient writers across all key learning areas.

The aim of this course is to target students' individual needs in writing so they can become more confident, capable and proficient writers.

It will assist students with their individual performance in all written tasks in the classroom as well as formalised tests such as NAPLAN, the Selective High School Placement Test and ICAS Assessments.



"Registered course for NSW Creative Kids voucher"

Year 5 Term 1 Creative Writing Course – Class Timetable

Course Name	Session	Class Time	Class Location
Creative Writing	Wednesday	5:00pm – 7:40pm	Strathfield Head Office

Year 5 Term 1 Creative Writing Course – Fee Schedule

Course Name	Session	Starting Date	Tuition Fee per week	No. of weeks	Material Fee	Total	Full Term Early Bird Special Offer* (by 9-Jan-21)	Full Term Enrolment Offer** (by 29-Jan-21)
Creative Writing	Wednesday	27-Jan	\$44	10	Inclusive	\$440	\$400	\$420

- **Early Bird Discount Offer*** prices are valid for **full** term advance payments by **5pm, 9th January 2021**.
 - Payments for Term 1 course at the Head Office will be available from **2nd January 2021**.
- **Full Term Enrolment Offer**** prices are valid for **full** term advance payments by **8pm, 29th January 2021**.
- **Additional 1.02% surcharge** will apply to all credit card payments. We only accept VISA and Master Card.

HELP STOP THE SPREAD COVID-19 AND STAY HEALTHY

- Cover your coughs and sneezes with your arm or a tissue (not your hands).
- Put your used tissues in a bin straight away and then wash your hands.
- Try not to touch your mouth or face.
- Don't hold hands with others
- Wash your hands often with soap and water including before and after going to the toilet.
- If you are sick or don't feel well, tell your teacher.

HELP STOP THE SPREAD COVID-19 AND STAY HEALTHY

We ask for all our parents and students to follow the guidelines below to enable us to provide the safest possible environment during the COVID-19 pandemic. We will constantly monitor the situation and continue to adopt NSW Health Department and Australian Government recommendations as they are presented.

Arrival and Departure

- Students' arrival and departure protocols will continue as they have been for the past terms using the designated driveway in front of the campus. Staff will be on hand to monitor this situation carefully. Please drive with the utmost caution and care when on campus.
- There will be restrictions on access to the college for anyone other than the college staff and students. Parents are to please contact the college by phone or email as required.
- Staff and parents are to observe physical distancing measures by not congregating in areas inside or around the campus. Adults must keep 1.5m away from other adults.
- Due to the limited capacity in each class, attending another class to make up the missed class will not be allowed.

Hygiene Arrangements

- The cleaning of classrooms and shared spaces has increased and will continue.
- All classrooms are equipped with hand sanitising stations. Students will be continually reminded of the need to wash and sanitise their hands throughout the day.
- Prominent signage across the campus in relation to COVID-19 that covers hand washing, personal hygiene, cough etiquette and social distancing.
- Students and teachers will largely remain in the same classrooms where possible.
- Students must not share food, drinks, water and stationery. Bring your own drink bottle.

Management of an unwell student

- Students experiencing symptoms, such as fever, cough or sore throat, will be isolated in an appropriate space with supervision and collected by a parent/carer as soon as possible.
- A medical certificate is not required to return to the college after a period of illness, however students should not return until symptoms resolve.
- If a student spreads droplet by sneezing, coughing or vomiting, surfaces will be immediately cleaned with disinfectant wipes (and using gloves).

Response protocols for COVID-19 cases

- Where there is a case of COVID-19 in the college, parents and students will be notified for the contact tracing process and to have the college site thoroughly cleaned.
- Information about the operational status of the college will be notified using the text message, email and our websites.
- During this period, online learning option will be made available through the Cyberschool or another website to enable students to do the makeup lesson at home.
- Parents and students will be notified when the college is ready to resume onsite learning.